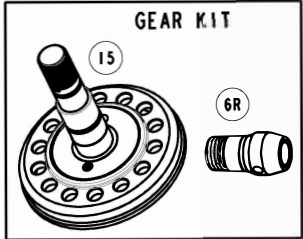
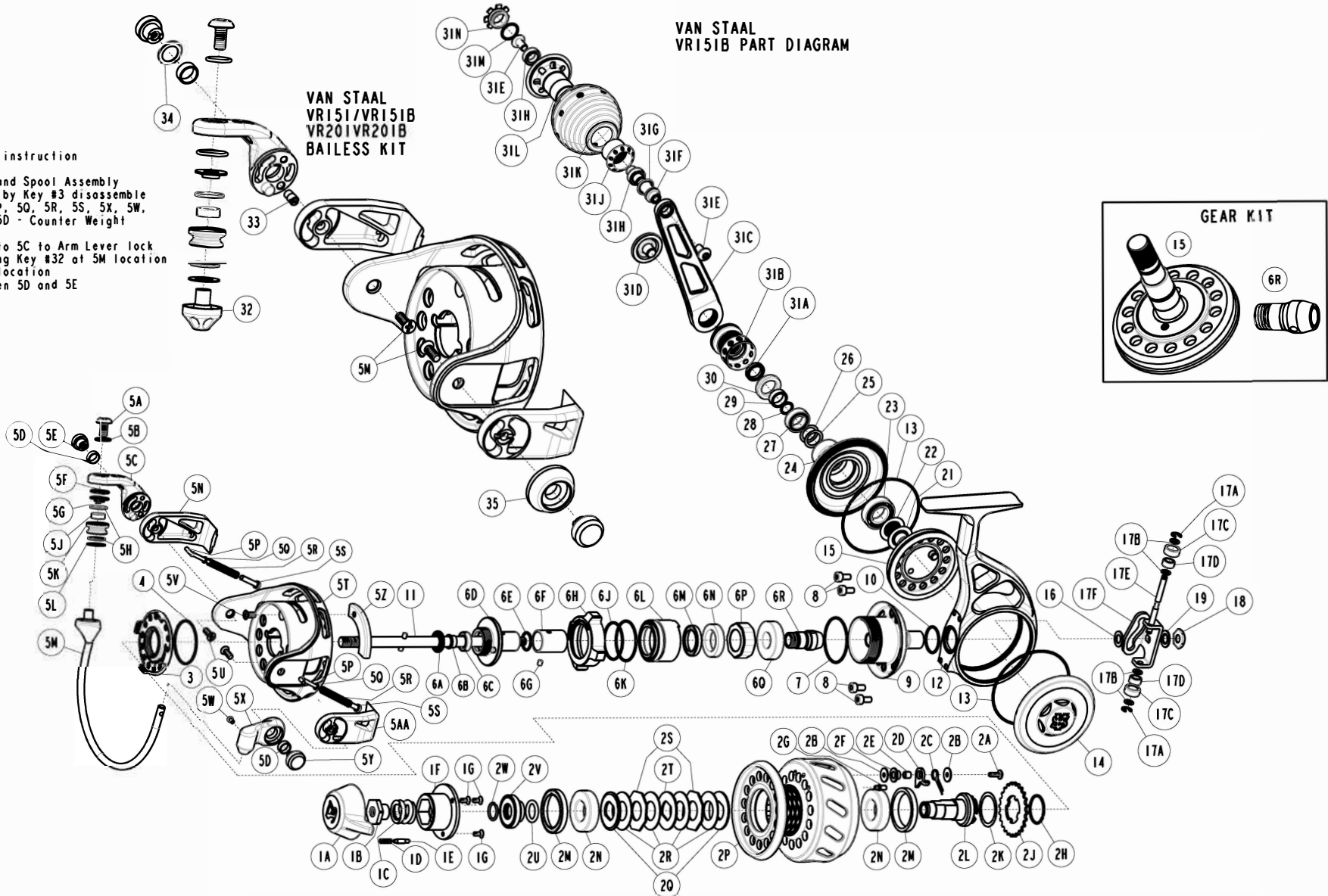


**Bailess Kit Assembly instruction**

- 1) Disassemble Drag and Spool Assembly
- 2) Disassemble Rotor by Key #3 disassemble
- 3) Remove key #5M, 5P, 5Q, 5R, 5S, 5X, 5W, 5V, 5Z, 5U, and 5D (5D - Counter Weight Side only)
- 4) Assemble Key #33 to SC to Arm Lever lock
- 5) Assemble Back using Key #32 at 5M location  
And key #35 to 5X location
- 6) Add key #34 between 5D and 5E

**VAN STAAL  
VR151/VR151B  
VR201VR201B  
BAILESS KIT**

**VAN STAAL  
VR151B PART DIAGRAM**



**Van Staal VR151B Part List**

| Key No.                               | Description                     | Part No.                     | QTY      | Key No.                      | Description                           | Part No.                 | QTY      |   |
|---------------------------------------|---------------------------------|------------------------------|----------|------------------------------|---------------------------------------|--------------------------|----------|---|
|                                       |                                 | VR151B                       |          |                              |                                       | VR151B                   |          |   |
| 1                                     | Drag Knob Assembly include      | VR332-61                     | 1        | 6F                           | Clutch Sleeve                         | VR139-02                 | 1        |   |
|                                       | 1A - Drag Knob                  | VR032-61                     | 1        | 6G                           | Clutch Sleeve Pin                     | VR149-01                 | 1        |   |
|                                       | 1B - Drag Nut                   | VS066-01                     | 1        | 6H                           | Lock Ring                             | VS122-04                 | 1        |   |
|                                       | 1C - Drag Spring                | VBQ043-01                    | 1        | 6J                           | Clutch Housing O-Ring "B"             | ORR8                     | 1        |   |
|                                       | 1D - Drag Click Spring          | SH049-01                     | 1        | 6K                           | Clutch Housing O-Ring "A"             | VS1591                   | 1        |   |
|                                       | 1E - Drag Click Pawl            | VBQ149-01                    | 1        | 6L                           | Clutch Housing                        | VR038-01                 | 1        |   |
|                                       | 1F - Drag Knob Cap              | VBQ071-01                    | 1        | 6M                           | Main Seal                             | VR252-02                 | 1        |   |
|                                       | 1G - Drag Knob Cap Screw        | HX107-04                     | 3        | 6N                           | Clutch Support Bearing                | BGRS5                    | 1        |   |
|                                       | 2                               | Spool Assembly (Kit) include | VR321-73 | 1                            | 6P                                    | One Way Clutch           | VR063-02 | 1 |
|                                       |                                 | 2A - Spool Click Pawl Screw  | QW053-10 | 1                            | 6Q                                    | Pinion Gear Ball Bearing | BGR02    | 1 |
| 2B - Spool Clicker Washer             |                                 | VBQ076-01                    | 2        | 7                            | Lock Ring O-Ring                      | VR101-01                 | 1        |   |
| 2C - Spool Click Pawl Spring          |                                 | VBQ068-01                    | 1        | 8                            | Body Neck Screw                       | VR054-01                 | 4        |   |
| 2D - Spool Click Pawl                 |                                 | VS103-02                     | 1        | 9                            | Body Neck Assembly                    | VR341-04                 | 1        |   |
| 2E - Spool Clicker Holder             |                                 | VBQ122-01                    | 1        | 10                           | Body Neck O-Ring                      | VR164-01                 | 1        |   |
| 2F - Spool Click Collar               |                                 | VBQ141-01                    | 1        | 11                           | Spool Shaft Assembly                  | VS315-01                 | 1        |   |
| 2G - Spool Click Spring Pin           |                                 | VBQ114-01                    | 1        | 12                           | Body                                  | VR001-04                 | 1        |   |
| 2H - Spool Click Ratchet Holding Ring |                                 | VS036-01                     | 1        | 13                           | Body Cover O-Ring                     | VS145-01                 | 2        |   |
| 2J - Spool Click Ratchet              |                                 | VS037-01                     | 1        | 14                           | Service Cover                         | VR024-04                 | 1        |   |
| 2K - Ratchet Spacer Washer            |                                 | VR035-01                     | 1        |                              | Gear Kit                              | VRL4312-01               | 1        |   |
| 2L - Spool Hub                        |                                 | VS213-01                     | 1        |                              | 6R - Pinion Gear Assembly             |                          |          |   |
| 2M - Drag Seal                        |                                 | OSPR3                        | 2        |                              | 15 - Drive Gear Assembly              |                          |          |   |
| 2N - Spool Ball Bearing               |                                 | BGRS3                        | 2        | 16                           | Spool Shaft Spacer                    | VR026-01                 | 1        |   |
| 2P - Spool                            |                                 | VR021-73                     | 1        | 17                           | O/S Slider Assembly (Kit) include     | VR4025-01                | 1        |   |
| 2Q - Drag "D" Washer - Chamfered      |                                 | VP080-01                     | 2        |                              | 17A - E-Clip                          | NX092-01                 | 2        |   |
| 2R - Drag Disc                        |                                 | VP039-01                     | 4        |                              | 17B - O/S Slider Bearing Spacer       | VR029-01                 | 4        |   |
| 2S - Drag Octagon Washer              |                                 | VP081-01                     | 2        |                              | 17C - O/S Slider Bearing Wear Ring    | VR106-01                 | 2        |   |
| 2T - Drag "D" Washer                  |                                 | VR045-01                     | 1        |                              | 17D - O/S Slider Bearing              | XX117-03                 | 2        |   |
| 2U - Spool Retainer O-Ring            |                                 | ORR3                         | 1        |                              | 17E - O/S Slider Bearing Shaft        | VR115-01                 | 1        |   |
| 2V - Spool Retainer                   | VS2024                          | 1                            |          | 17F - O/S Slider             | VR025-01                              | 1                        |          |   |
| 2W - Spool Retainer Ring              | SR3041                          | 1                            | 18       | M5x0.8 Hex Nut               | VR014-01                              | 1                        |          |   |
| 3                                     | Rotor Nut                       | VR006-04                     | 1        | 19                           | Teeth Washer                          | WSLCIT1                  | 1        |   |
| 4                                     | Rotor Nut O-Ring                | VR145-01                     | 1        | 21                           | Drive Gear Adjust Washer              | DF035-02                 | 0        |   |
| 5                                     | Rotor Assembly (Kit) include    | VRL4009-11                   | 1        | 22                           | Drive Gear Adjust Washer              | DF035-05                 | 0        |   |
|                                       | 5A - Line Slider Screw          | VR108-01                     | 1        | 23                           | Gear Bearing                          | CF017-05                 | 1        |   |
|                                       | 5B - Line Slider Screw O-Ring   | VS164-01                     | 1        | 24                           | Body Cover                            | VR023-04                 | 1        |   |
|                                       | 5C - Bail Arm Lever             | VRL007-02                    | 1        | 25                           | Body Cover Ball Bearing Adjust Washer | VR084-01                 | 0        |   |
|                                       | 5D - Arm Lever Bushing          | VR158-01                     | 2        | 26                           | Body Cover Ball Bearing Adjust Washer | VR084-02                 | 0        |   |
|                                       | 5E - Arm Lever Cap              | VR113-02                     | 1        | 27                           | Body Cover Ball Bearing               | TW058-06                 | 1        |   |
|                                       | 5F - Arm Lever O-Ring           | VS101-01                     | 1        | 28                           | Handle Sleeve O-Ring                  | VR098-01                 | 1        |   |
|                                       | 5G - Line Roller Spacer "A"     | VR016-01                     | 1        | 29                           | Handle Sleeve                         | VS110-01                 | 1        |   |
|                                       | 5H - Line Roller Seal           | VR262-01                     | 2        | 30                           | Gear Shaft Seal                       | VS109-01                 | 1        |   |
|                                       | 5J - Line Roller Ball Bearing   | CT157-06                     | 1        | 31                           | Handle Assembly include               | VR318-04                 | 1        |   |
|                                       | 5K - Line Roller                | VR004-01                     | 1        |                              | 31A - Handle Stand Insert             | VS158-01                 | 1        |   |
|                                       | 5L - Line Roller Spacer "B"     | VR102-01                     | 1        |                              | 31B - Handle Stand                    | VS058-05                 | 1        |   |
|                                       | 5M - Bail Assembly              | VRL347-11                    | 1        |                              | 31C - Handle Arm                      | VR018-04                 | 1        |   |
|                                       | 5N - Bail Spring Cover Support  | VRL046-02                    | 1        |                              | 31D - Handle Cap                      | VS054-03                 | 1        |   |
|                                       | 5P - Bail Spring Link           | VS095-01                     | 2        |                              | 31E - Handle Knob Screw               | VR077-02                 | 2        |   |
|                                       | 5Q - Bail Spring Spacer         | VR048-01                     | 2        |                              | 31F - Handle Knob Shaft               | VR005-02                 | 1        |   |
|                                       | 5R - Bail Spring                | VR022-01                     | 2        |                              | 31G - Handle Knob Seal                | VR262-01                 | 1        |   |
|                                       | 5S - Bail Spring Pivot          | VR095-01                     | 2        |                              | 31H - Handle Knob Ball Bearing        | VR028-02                 | 2        |   |
|                                       | 5T - Rotor                      | VR009-11                     | 1        |                              | 31J - Handle Knob Nut                 | VS014-02                 | 1        |   |
|                                       | 5U - Bail Spring Cover Screw    | VR057-01                     | 2        |                              | 31K - Handle Knob                     | VR013-01                 | 1        |   |
| 5V - Counter Weight Screw             | VR057-02                        | 1                            |          | 31L - Handle Knob Hub        | VR003-02                              | 1                        |          |   |
| 5W - Bail Holder Screw                | VR051-01                        | 1                            |          | 31M - Handle Knob Cap O-Ring | VS101-01                              | 1                        |          |   |
| 5X - Bail Holder                      | VRL017-12                       | 1                            |          | 31N - Handle Knob Cap        | VR073-02                              | 1                        |          |   |
| 5Y - Bail Holder Cap                  | VS113-01                        | 1                            |          | Wrench - Service Cover       | VR170-01                              | 1                        |          |   |
| 5Z - Counter Weight                   | VR148-01                        | 1                            |          |                              |                                       |                          |          |   |
|                                       | 5AA - Bail Spring Cover Support | VR046-02                     | 1        |                              | <b>Bailless Kit</b>                   | <b>VR4010-02</b>         | <b>1</b> |   |
| 6A                                    | Spool Shaft Guide Seal          | VR171-10                     | 1        | 32                           | Line Slider - Bailless                | VS010-02                 | 1        |   |
| 6B                                    | Spool Shaft Bearing Bushing     | VR259-01                     | 1        | 33                           | Arm Lever Locking Pin                 | VR085-01                 | 1        |   |
| 6C                                    | Spool Shaft Bearing             | CH027-06                     | 1        | 34                           | Arm Lever Spacer Washer               | VR109-01                 | 1        |   |
| 6D                                    | Spool Shaft Guide Assembly      | VR375-04                     | 1        | 35                           | Balancer                              | VS017-01                 | 1        |   |
| 6E                                    | Spool Shaft Guide O-Ring        | VS101-01                     | 1        | 5U                           | Bail Spring Cover Screw               | VR057-01                 | 2        |   |